

women  
banking  
and  
finance



# WiBF 2026 MEMBERSHIP

**Connection. Growth. Recognition.**

Your membership unlocks opportunities  
to network, learn and be celebrated.

wibf.org.au 

## **CELEBRATING OVER 25 YEARS OF CONNECTION, GROWTH AND RECOGNITION.**

**WiBF is a non-profit membership association  
dedicated to boosting the presence of women in  
leadership roles within the banking and finance sector.**

WiBF's corporate members represent all facets of the industry, from major Australian and international banks through to mutuals, insurers to investment managers, superannuation funds, professional services, government, financial regulators, fin-techs, treasury, exchanges & corporates servicing the sector. Our members collectively employ over **600,000 individuals**.

We prioritise gender diversity as a key driver of business success, emphasising a passion for creating real change, collaborative partnerships with our members, and a commitment to achieving results through innovation.

Throughout the year, WiBF Members enjoy privileged access to strategic networking, industry award recognition, professional and personal development programs, and a range of content both live and on-demand through the WiBF Dashboard.

WiBF offers guidance and tools designed to help everyone, of all genders, from various levels of experience in your organisation, find and maintain the space to grow and thrive in the banking and finance industry.

WiBF creates smart and innovative business opportunities for its members, through customised education programs, in-person and virtual events and strategic networking sessions to assist members in meeting their business objectives.

## **Connection. Growth. Recognition.**

### **WiBF Career Journey: From Graduate to Board Room**

From first job to board seat, WiBF provides the scaffolding for a meaningful and upward career trajectory in the Australian banking and finance industry.

Through connection, capability-building, and celebration, WiBF helps professionals move forward with confidence, on their own terms.

REAL VOICES. REAL IMPACT.  
WHAT OUR MEMBERS LOVE  
ABOUT THEIR MEMBERSHIP!

”

**Connection,  
Networking, Training**

**Ideas specific to my stage in my career  
and the opportunity to be recognised for  
my work through the WiBF Awards**

**Autonomy of own  
elevation and  
professional  
development**

**Access to inspiring work  
stories of so many other  
women (and men),  
inclusivity and  
encouragement**

**Quality of programs  
and speakers**

**The WiBF on Demand feature**

**Variety of topics and  
pricing to suit all budgets**

**Exposure to other companies  
outside of my organisation**

## MAKING A DIFFERENCE ACROSS THE GLOBE



**600,000+**  
Individuals  
represented  
across  
Australia



**110+**  
WiBF  
Members  
including 18  
University  
Members



**300+**  
WiBF 2025  
National  
Industry  
Award  
Nominations

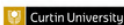
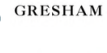
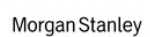


**17**  
WiBF 2025  
National  
Industry  
Award  
Winners



International  
events and  
panels to  
gather global  
best  
practices

# OUR CORPORATE MEMBERS



## WIBF MEMBERSHIP OPTIONS

# DIAMOND MEMBERSHIP

January – December 2026

\$69,300 + GST

### OPTION A

- **1** National Industry Awards Category Sponsorship
- **1** WiBF Peak Performance Program
- **2** WiBF Applied Confidence Program
- **3** WiBF Mentoring Program (WiBF Flagship Program)
- **5** WiBF's Workplace Wellbeing & Flourishing Program
- **10** WiBF Corporate Compliance Series **"NEW 2026"**
- **15** National Industry Awards tickets
- **UNLIMITED** Virtual WiBF Masterclasses
- **UNLIMITED** WiBF RISE Workshop **"NEW 2026"**
- **UNLIMITED** WiBF Meditation Series **"NEW 2026"**
- **UNLIMITED** Webinars Registrations
- **UNLIMITED** Registrations to the WiBF Dashboard & WiBF On-Demand
- **EARLY** registrations to events
- **BRAND** recognition at all in-person events on event slides



### OPTION B (STREAMLINED OFFERING)

- **1** National Industry Awards Category Sponsorship
- **1** in-person Masterclass for up to 25 individuals at your office
- **5** WiBF Mentoring Program (WiBF Flagship Program)
- **10** WiBF Corporate Compliance Series **"NEW 2026"**
- **15** National Industry Awards tickets
- **UNLIMITED** Virtual WiBF Masterclasses
- **UNLIMITED** WiBF RISE Workshop **"NEW 2026"**
- **UNLIMITED** WiBF Meditation Series **"NEW 2026"**
- **UNLIMITED** Webinars Registrations
- **UNLIMITED** Registrations to the WiBF Dashboard & WiBF On-Demand
- **EARLY** registrations to events
- **BRAND** recognition at all in-person events on event slides





## WIBF MEMBERSHIP OPTIONS

### GOLD MEMBERSHIP

January – December 2026

\$36,750 + GST

#### OPTION A



- **1** WiBF Applied Confidence Program
- **1** WiBF Peak Performance Program
- **2** WiBF's Workplace Wellbeing & Flourishing Program
- **2** WiBF Mentoring Program (WiBF Flagship Program)
- **2** National Industry Awards tickets
- **5** WiBF's Corporate Compliance Essentials Series "NEW 2026"
- **UNLIMITED** Virtual WiBF Masterclasses
- **UNLIMITED** WiBF RISE Workshop "NEW 2026"
- **UNLIMITED** WiBF Meditation Series "NEW 2026"
- **UNLIMITED** Webinars Registrations
- **UNLIMITED** Registrations to the WiBF Dashboard & WiBF On-Demand

#### OPTION B (STREAMLINED OFFERING)



- **1** in-person Masterclass for up to **15** individuals at your office
- **2** National Industry Awards tickets
- **2** WiBF Mentoring Program (WiBF Flagship Program)
- **UNLIMITED** Virtual WiBF Masterclasses
- **UNLIMITED** WiBF RISE Workshop "NEW 2026"
- **UNLIMITED** WiBF Meditation Series "NEW 2026"
- **UNLIMITED** Webinars Registrations
- **UNLIMITED** Registrations to the WiBF Dashboard & WiBF On-Demand

## WIBF MEMBERSHIP OPTIONS

### SILVER MEMBERSHIP

January – December 2026

\$12,600 + GST

- **1** Applied Confidence
- **1** WiBF Peak Performance
- **2** National Industry Awards ticket
- **2** WiBF's Workplace Wellbeing & Flourishing Program
- **2** WiBF's Corporate Compliance Essentials Series "NEW 2026"
- **4** WiBF Masterclasses
- **UNLIMITED** WiBF RISE Workshop "NEW 2026"
- **UNLIMITED** WiBF Meditation Series "NEW 2026"
- **UNLIMITED** Webinars Registrations
- **UNLIMITED** Registrations to the WiBF Dashboard & WiBF On-Demand



### BRONZE MEMBERSHIP

January – December 2026

\$5,250 + GST

- **1** WiBF's Workplace Wellbeing & Flourishing Program\*
- **1** National Industry Awards ticket
- **3** WiBF Masterclasses
- **UNLIMITED** WiBF RISE Workshop "NEW 2026"
- **UNLIMITED** Webinars Registrations
- **UNLIMITED** Registrations to the WiBF Dashboard & WiBF On-Demand



\*Please note you may exchange WiBF's Workplace Wellbeing & Flourishing Program for **10** Masterclass placements

**CORPORATE MEMBERS RECEIVE YEAR-ROUND LOGO VISIBILITY ON OUR WEBSITE AND IN NEWSLETTERS, AMPLIFYING YOUR BRAND ACROSS THE WIBF NETWORK**

## INSIGHTS FROM INDUSTRY LEADERS

Wondering what WiBF can do for you and your organisation?  
Hear it directly from some of the most respected CEOs in our industry.



ANTONY SHAW, CEO HSBC AUSTRALIA AND NEW ZEALAND

*"The WiBF National Industry Awards highlight that diversity is a business imperative, and inclusion is the tool that unlocks its potential. I would like to acknowledge the excellent work of WiBF over the last 25 years and the important role the organisation continues to play in celebrating the achievements of women in banking and finance."*



ZOË LEONARD, CEO TURKS

*"It was truly an honour to be part of WiBF's 25th Anniversary Distinguished Leaders Series and to share my career journey with this incredible community. WiBF has created a powerful platform for women in banking and finance to connect, learn and be inspired by each other's stories. I'm proud to share my journey and hopefully inspire others along the way."*



GLENN MORGAN, CEO DEUTSCHE BANK AUSTRALIA

*"Deutsche Bank has been a member for 18 of the 25 years of WiBF, and the organisation continues to be an important partner for our bank and a positive force for the industry as a whole. We are proud to sponsor the Inclusive Leader Award, which is an extension of what WiBF represents. Inclusive leaders understand that diversity of perspectives make a difference, they harness it and in doing so, they create a better workplace for everyone."*



THOMAS BERING, CEO CREDIT CORP GROUP

*"Credit Corp is really pleased to be associated with WiBF. I was genuinely honoured to be part of WiBF's 25th Anniversary Distinguished Leaders Series. WiBF has built an incredible platform over the years to share leadership experiences and inspire future generations in banking and finance and I'm proud to contribute to that conversation."*



BLAIR WARK, CEO RBC

*"RBC Capital Markets have been a very proud member of WiBF for coming up 12 years now and I have been fortunate to see the impact that has had on many of our staff. RBC has been actively involved in the WiBF Mentoring Program, which I have been proud to be a mentor for a number of years now."*



SORAYA ALALI, CEO ANZ ZIP CO

*"Just three years ago, I was sitting in this very room as a finalist, feeling the power of being surrounded by so many inspiring women. That experience reminded me how vital connection and communities like WiBF are in shaping leadership. Now, as Zip's ANZ CEO, one of the most rewarding parts of my role is being able to pass those same opportunities on to my team. At Zip, we're passionate about pushing boundaries, backing our people, and helping unlock their potential - because growth, connection and possibility start with the people around us."*



## WIBF 2026 PROGRAMS

**This year, WiBF is back with even more impactful programs, all designed to support your teams and their professional journey.**

- WiBF Applied Confidence
- WiBF Mentoring for Success
- WiBF Workplace Wellbeing & Flourishing Program
- WiBF AI & Digital Academy
- WiBF Exclusive Half Day Senior Executives Women Training
- WiBF Peak Performance
- WiBF Meditation Series **"NEW 2026"**
- WiBF Corporate Compliance Series **"NEW 2026"**
- WiBF RISE Workshop **"NEW 2026"**

These programs are crafted to help your teams build strong mentorship connections, boost self-assurance, honour outstanding achievements, and reach new heights in their professional journey.

## WiBF Applied Confidence

In this incredibly hands-on and practical event for leaders, Dr Louise Mahler will provide a point of contact to analyse, plan and review through the lens of Body/Voice and Frameworks of Communication, tailored specifically for those in leadership roles.

### SYDNEY OR MELBOURNE

Locations to  
choose from



### 3.5 HOUR

In-person  
session with up  
to 15 other  
participants



**22ND JULY - SYDNEY  
23RD JULY - MELBOURNE**

## WHO IS THE RIGHT FIT

- The program is suited for those in leadership roles
- All gender identities welcome
- For those interested in improving confidence and learning new skills and processes that are effective and show leadership



**Connection. Growth. Recognition.**

## WIBF 2026 PROGRAMS

### WiBF Mentoring for Success Program

In today's fast-changing world, great leaders are those who can adapt, innovate and bring others along with them. Lead with inclusion and grow with agility through the Mentoring for Success Program – designed to empower professionals across the banking and finance sector to accelerate their careers, build inclusive leadership skills and create meaningful impact within their organisations and beyond.

In 2026, this flagship WiBF initiative, will continue to be open for participants of any gender. This important evolution provides a broader representation of emerging leaders the opportunity to develop inclusive leadership skills and experience the benefit of this impactful program. Given the original intent of the program to increase the female leadership pipeline, we will continue to expect a strong representation of female mentees.

#### 6 MONTH

Program length



**STARTS APRIL 2026**

#### MENTEES

Must meet three of the following requirements:

- Minimum of 10 years' professional experience
- Currently managing or leading a team directly or through a significant project or initiative
- Aspiring to a senior leadership position in the near future
- A clear agenda relating to the enhancement of strategic skills, stakeholder engagement and/or development of their leadership profile

#### MENTORS

Must meet three of the following requirements:

- Minimum of 20 years' professional experience
- Strong commitment and interest in supporting the development of emerging leaders
- Significant experience at a strategic or executive leadership level
- Prior successful informal or formal mentoring experience and an appetite to further develop their mentoring impact

### OVER THE LAST 16 YEARS...



**1,642**

Participants have completed this program



**38**

Organisations had a mentor or mentee represented on this program



**Connection. Growth. Recognition.**

## WIBF 2026 PROGRAMS

### WiBF Workplace Wellbeing & Flourishing Program

EARN  
5 CPD  
POINTS!

This innovative WiBF program is at the cutting edge of leadership and personal wellbeing. This program is designed for open-minded, growth oriented leaders, to equip you with the latest strategies and tools to lead effectively, cultivate deep mental & emotional flexibility and move through life with grace and ease.

Participants will have the opportunity to learn from peers and build their industry networks by engaging in weekly virtual sessions over 10 weeks, in addition to individual coursework modules. As the program progresses, participants are encouraged to share their experiences as they implement the techniques throughout the course and receive ongoing feedback to help shape their leadership trajectory.

Coursework modules include mindset mastery, emotional resilience, understanding world views, integral leadership, building high-performance cultures and much more. Participants look at how one's perspective shapes one's worldview, experiences and performance in life. Through enhancing self-awareness of your unique perceptions and the relationship between such perceptions extending to your mental and emotional health, participants will learn strategies to respond to life circumstances. As such, those who can master their mind can create a greater sense of freedom, growth, and flourish in both business and personal settings.

**10 WEEK**

Program length



**1.5 HOUR**

Per week via Zoom



**COHORT 1:**

6th May 2026

**COHORT 2:**

23rd September 2026

### WHO IS THE RIGHT FIT

- Leaders with an open-mind, who are ready to step outside their comfort zone for a profound experience. This program is ideally suited to those seeking the latest consciousness, cutting-edge personal and leadership development beyond the typical and traditional leadership programs on the market.
- They thrive on exploring unconventional avenues for personal and team growth, driven by a shared goal of enhancing well-being and fostering innovation within their teams.
- Join us to cultivate a community of leaders dedicated to transforming challenges into opportunities for collective success. This is the ideal educational program for those looking for the next step in their career, for personal growth and to flourish in their professional and personal relationships.
- All gender identities are welcome to participate in this WiBF program.



- 3x Productivity gains
- Leaders, leading from the frontier edge of humanity
- A flourishing of personal wellbeing and team harmony
- Deeper engagement, motivation and purpose



## WIBF 2026 PROGRAMS

### WiBF's AI & Digital Academy

In today's rapidly evolving financial landscape, staying informed and adaptable is crucial for effective leadership. The WiBF AI & Digital Academy is designed to equip professionals in banking and finance with the skills and insights necessary to lead in an increasingly digital world and better serve their clients. Our academy offers two comprehensive program options:

#### FOUNDATIONS PROGRAM (MAY – AUGUST)

EARN  
5 CPD  
POINTS!

This fast-tracked course is ideal for professionals seeking to stay informed about the latest advancements in artificial intelligence, digital technologies and their practical applications in banking and finance. Participants will gain essential knowledge to leverage AI and digital tools, enhancing decision-making and efficiency within their organisations. You'll also develop new ways to support clients by understanding their evolving needs in a digital landscape.

6 live sessions, including: Opening panel event – 4 online sessions – 1 fireside chat online  
In-person launch with panel discussion offered in Sydney and Melbourne

#### LEADERSHIP PROGRAM (MAY – NOVEMBER)

EARN  
7 CPD  
POINTS!

For those looking to deepen their expertise, the leadership program provides an immersive experience that covers advanced AI technologies, digital transformation strategies and leadership skills. Graduates of this program will be equipped not only to understand these innovations but to lead their implementation, driving strategic growth across their organisations while being better prepared to support clients' digital and financial goals.

11 live sessions, consisting of: Opening panel event – 8 online sessions – 2 fireside chats online in-person launch with panel discussion offered in Sydney and Melbourne

#### KEY BENEFITS:

- Understand the evolving role of AI and digital technology in banking and finance.
- Develop critical leadership skills for driving digital transformation and client-centered strategies.
- Gain practical insights into AI-driven solutions for optimising processes and improving customer experiences.
- Choose between a streamlined foundations program or an in-depth leadership track, based on your goals and schedule.
- Be better equipped to understand and support your clients' changing needs in a digital-first world.

#### WHO SHOULD ENROLL:

This program is tailored for current and aspiring leaders in banking and finance, eager to stay ahead of the curve, deliver superannuation or customer service and embrace the future of finance. Stay informed and lead with confidence. Transform your career and elevate client support with the AI & Digital Academy.



#### 1.5 HOUR INTERACTIVE ONLINE EDUCATION SESSIONS

Provided once per month.



#### FOUNDATIONS PROGRAM

May to August 2026

#### LEADERSHIP PROGRAM

May to November 2026



## WiBF Exclusive Half Day Senior Executives Women Training

Here is the missing ingredient in leadership; as you move up the ladder of corporate life, the need to be seen, heard and felt in your role grows exponentially, but who's helping? Regularly leaders face conflict with regulators, clients and the media, and regularly, they fail. If these skills aren't grasped, solidified and embedded, you can and will find yourself in a situation where it is too late.

And these skills are not a mystery of the sphinx. It's about three things: your body, your voice and frameworks for every level of emotion. You will cry "Why didn't I know this before!" It works. It's fun and it's absolutely essential for anyone leading today.

- **Skills of body:** Such as eye contact, gestures, spatial psychology, movement and posture, listening and remaining neutral
- **Skills of voice:** Initiating sound, voice of leadership, psychology of voice, vocal power
- **Frameworks:** Handling difficult situations, beginning a presentation to make it interesting, offering feedback

*"I cannot thank Louise enough – the skills she gave me early on are now fully ingrained and a critical part of all my communications in every setting from one-on-ones, through board meetings to big external events; from shift workers to prime ministers. I feel Louise gave me a wonderful advantage that helps my authentic- self come through in all my interactions (business and personal), that few of my peers have. I cannot thank Louise enough for the power she has given me: she has been a material addition to my happiness, success and potential."*

Sir Andrew McKenzie

x-CEO BHP

Chairman Shell and UKRI



**IN-PERSON GROUP SETTING**



**OCTOBER 2026**

Friday 9th, in-person Sydney





## WIBF 2026 PROGRAMS

### WiBF Peak Performance Coaching Program

Peak Performance is a tailored coaching program offered exclusively to members of Women in Banking and Finance to support you through your next significant transition. Structured with the convenience of remote online delivery, the program is accessible to our members throughout Australia and offshore, with the flexibility to time sessions in line with your individual needs.

#### 3 SESSIONS

One-on-one career coaching sessions



#### FLEXIBLE

Start time tailored to you

#### WHO IS THE RIGHT FIT

- For those who are striving to achieve a promotion or career advancement
- If you have recently transitioned into a new role or planning a move towards one

#### CHOOSE YOUR COACH



#### 4 COACHES

Just as no two careers are the same, so are no two coaches, which is why we offer flexibility so you can find the right coach for you.



### WiBF Meditation Series

**"NEW 2026"**

These guided meditation sessions help you shift from focused beta waves to restorative alpha waves, reducing stress, boosting memory, and enhancing clarity. Morning practices prevent fatigue and anxiety during the workday, while evening sessions release tension, restore calm, and support restful sleep. Suitable for beginners and experienced meditators alike, each session uses breathing, mindfulness, and meditation techniques to strengthen your nervous system and overall wellbeing.

#### 30 MINUTE SESSIONS

One session per fortnight



#### FORTNIGHTLY STARTING

4th February – 2nd December 2026

#### WHO IS THE RIGHT FIT

- Busy professionals seeking practical tools to manage stress, boost focus, and transition smoothly between work and home life
- Anyone, any gender, any career stage, this series welcomes everyone from beginners to seasoned meditators. Suitable for anyone who wants guided practices to support resilience, wellbeing and clarity



### WiBF's Corporate Compliance Essentials Series **"NEW 2026"**

WiBF's Corporate Compliance Essentials provides organisation-wide training for employees at every level, from frontline staff to directors. Designed to be practical and engaging, each module equips participants with knowledge and skills they can apply immediately in their roles. Module duration is 30–45-minutes, fitting seamlessly into busy workdays, with access available throughout the calendar year.

#### The five modules are:

1. Reporting Breaches
2. Conflicts of Interest
3. Handling Complaints and Disputes
4. Cyber Security
5. Protecting Privacy and Data

#### 5 BITE-SIZED MODULES

Online, self-paced study



#### FLEXIBLE

Start anytime at your own pace

#### WHO IS THE RIGHT FIT

- For those who are striving to achieve a promotion or career advancement
- If you have recently transitioned into a new role or planning a move towards one
- Anyone who wants to ensure their businesses are consistent and current with today's regulatory expectations



### WiBF RISE Workshop **"NEW 2026"**

RISE 2026 Interactive Workshop is designed to equip professionals with the confidence and communication skills needed to thrive in 2026 and beyond. Led by career coaches Kate Boorer and Fiona Pearman, this virtual workshop brings together members across the WiBF community to network, share experiences and develop practical strategies for success.

This highly interactive session provides a supportive environment to strengthen your skills, ensuring you are prepared to seize new opportunities and advance your career.

#### 2.5 HOUR WORKSHOP

Delivered virtually



#### FRIDAY 30TH JANUARY 2026

8:30AM – 11:30AM AEDT

#### WHO IS THE RIGHT FIT

- Professionals seeking to build confidence and communicate their value more effectively
- Professionals preparing for career advancement, new opportunities, or leadership roles in 2026
- Those looking to strengthen resilience, set boundaries and navigate workplace challenges with greater impact



## WIBF 2026 MASTERCLASSES

### WiBF Virtual Masterclasses

EARN 1 CPD  
POINT PER  
MASTERCLASS!

*Only my second masterclass I've attended and it's was amazing! Wish I had known about these earlier in my banking career!*

WiBF is excited to announce 10 amazing masterclasses coming up in 2026!

These 2.5 hour sessions are designed to empower and inspire, covering essential topics:

#### FEBRUARY

##### Thursday 26th

- Building Your Own Personal and Professional Brand

#### MARCH

##### Thursday 19th

- Building Authentic Connections – The 3 Elements of Trust to Build Network Relationships

##### Thursday 26th

- AI in Finance: Trends, Tools, and Culture Shifts

#### APRIL

##### Friday 17th

- Virtual Roundtable on Active Allyship: Engaging Leaders in Gender Equity

#### MAY

##### Thursday 21st

- Overcoming Perfectionism and Imposter Syndrome

#### JUNE

##### Thursday 18th

- The Engagement Formula – How Motivation Transforms Teams

#### AUGUST

##### Thursday 20th

- Financial Wellness – Setting and Achieving Collective Financial Goals

#### SEPTEMBER

##### Thursday 17th

- Transformation – Motivation, Inspiration and Commitment

#### OCTOBER

##### Thursday 15th

- Delegate like a Productivity Ninja

#### NOVEMBER

##### Thursday 19th

- Mental Health in the Workplace – Building Resilient Teams.



## WiBF Private In-Person Masterclasses

WiBF offers a variety of topics available as private sessions at your organisation.

Celebrate your staff coming back to the office! Get in touch with us if you have other topics in mind.

These sessions are designed to empower and inspire, covering essential topics, with example options such as:

- Brave Conversations & Building Confidence
- Overcoming Imposter Syndrome & Perfectionism
- High Productivity Techniques & Mindset
- Financial Wellbeing at Work – Tips to address Financial Stress
- AI Tools/Trends/Diversity & Culture Impact in the banking & finance sector
- Mental Health First Aid in the Workplace
- Build Your Own Personal and Professional Brand
- **NEW** February 2026 in-person Masterclass in Auckland – Leading with Purpose & Authenticity

**Included for Diamond and Gold members (MEMBERSHIP OPTION B)  
or available as a paid add-on for all other levels of membership.**



## WIBF 2026 IN-PERSON EVENTS

**WiBF In-Person Events are where connections spark, skills grow and leaders are made.**

Open to all levels; from university students and recent grads, to senior executives and c-suite leaders, our calendar is packed with opportunities to learn, share and network across industries. Enjoy opportunities to invite clients or colleagues to selected in-person events, and as a WiBF member, gain exclusive access to experiences that grow your skill and expand your network. Keeping you connected to the banking and finance industry across Australia and APAC.

### IN-PERSON EVENTS

#### February

- WiBF, University of Queensland & ANZ – Building Financial Futures: Wealth, Protection & Legacy for Women, Brisbane, 12th February

#### March

- WiBF & ANZ – International Women's Day; Balance the Scales, Sydney, 12th March

#### June

- WiBF & CBA – Why Invest in Global Markets, Sydney

#### July

- WiBF & ANZ – Economic Outlook 2026, Sydney
- WiBF & ANZ – Economic Outlook 2026, Melbourne

#### August

- WiBF & Swinburne University – Career Pathways and Expo, Melbourne, 13th August

#### September

- WiBF National Industry Awards Luncheon, Sydney, 17th September

#### October

- WiBF & CBA – Explore the Pathways into Trading, Sydney

“This was a great event, with a panel of amazing speakers who were very knowledgeable and provided some really good insights into how technology is being applied. I would highly rate this event and can't wait for the next one!”

**Want to partner and host an event with WiBF in 2026?  
Get in touch today to explore how your organisation can bring a  
WiBF experience to life.**

**SCAN THE QR CODE TO WATCH ONE OF OUR PAST 2025 EVENT HIGHLIGHT VIDEO  
WITH ONE OF OUR CORPORATE MEMBER**





## WIBF 2025 IN-PERSON EVENTS

WiBF proudly hosted **14** in-person events in **2025**.  
Here's just a selection of the many highlights.



### WIBF, ANZ & UQ FEBRUARY

Discover the Future of  
Work in Queensland  
Brisbane



### WIBF & ANZ MAY

Adapting to Change  
in Financial Services  
Melbourne



### WIBF, NAB & LINKEDIN MAY

Women Leading Wealth  
Melbourne



### WIBF & ANZ JULY

Economic Outlook 2025  
Sydney



### WIBF & NAB AUGUST

Women in Markets  
Leading through Change  
Sydney



### WIBF & WESTPAC AUGUST

Breaking Boundaries  
Women Leading the Future of  
Tech and Finance  
Sydney



### WIBF, DEUTSCHE BANK & UNSW SEPTEMBER

Student Business Insights into  
Deutsche Bank and Careers in  
Global Finance  
Sydney



### WIBF SEPTEMBER

WiBF's 25th Anniversary  
Awards Gala  
Sydney



### WIBF & SWINBURNE UNIVERSITY OCTOBER

Exploring Pathways to Success:  
Careers in Banking & Finance  
Panel & Expo  
Melbourne



*I loved the event, it was an incredible opportunity to learn from a phenomenal leader. My biggest takeaways were the power of resilience, staying true to yourself and the importance of shared values.*



*Attending the Women in Banking and Finance event was an incredibly enriching experience. The discussions around AI and bots were insightful, and I walked away with a deeper understanding of how technology is transforming our industry. The speakers provided valuable perspectives on embracing change, while also emphasising the importance of maintaining the skills and expertise that make us effective in our professions. Overall, it was a great opportunity to learn, connect, and feel inspired to adapt to the evolving landscape of finance.*



## WIBF 2026 NATIONAL INDUSTRY AWARDS & SPONSORSHIP OPPORTUNITIES

Join us for a truly special celebration at the WiBF 2026 National Industry Awards. We are excited to announce that next year's WiBF 2026 National Industry Awards will be held as a luncheon on Thursday, 17th September 2026. Save the date!

This extraordinary event will once again honour the remarkable achievements of WiBF members who have shown exceptional courage and conviction in their careers, making a significant impact in the banking and finance industry. Don't miss this unforgettable event.



### Presenting/Headline Sponsor

**\$25,000 +GST**

- The choice of one Award Category
- Co-Branded event opening remarks with WiBF
- Opportunity to feature an inspiring video relating to diversity and inclusion
- Branded as the presenting sponsor on the website
- Branded as the presenting sponsor in the promotion of the awards across all media channels for the period of the awards campaign
- Presenting event sponsor branding displayed at the Awards
- Logo displayed on digital screen during the winner's announcement
- Logo displayed on media wall during the entire event
- 10 premium tickets to the Awards valued at over \$2,500
- All headline sponsorship attendees will have access to the VIP lounge
- One seat on the WiBF 2026 Awards Committee



### Global Live Stream

**\$10,000 +GST**

- Exclusive branding exposure of our National Industry Awards live-streamed event
- Branded as the audio-visual sponsor on the website
- Branded as the audio-visual sponsor in the promotion of the awards across all media channels for the period of the awards campaign
- Audio-visual category sponsor branding displayed at the Awards
- Logo displayed on media wall during the entire event
- 5 premium tickets to the Awards valued at over \$1,250
- One seat on the WiBF 2026 Awards Committee

**BECOME A SPONSOR AND SEE WHAT THAT COULD LOOK LIKE,  
VIEW OUR 2025 NATIONAL INDUSTRY AWARDS VIDEO**



## WIBF 2026 NATIONAL INDUSTRY AWARDS & SPONSORSHIP OPPORTUNITIES



**WiBF National Industry Awards celebrate the accomplishments of an individual who is a member of WiBF and demonstrates courage and conviction in their working life, as evidenced by their success in the area of banking and finance.**

### Awards

**\$6,000 per category +GST**

- Exclusive branding of one category award
- Brief message opportunity during your sponsored category announcement
- Opportunity to present the trophy to the winner of your category
- Branded as the award category sponsor on the website
- Branded as the award category sponsor in the promotion of the awards across all media channels for the period of the awards campaign
- Award category sponsor branding displayed at the Awards
- Logo displayed on digital screen during the winner's announcement
- Logo displayed on media wall during the entire event
- 5 premium tickets to the Awards valued at over \$1,250
- One seat on the WiBF 2026 Awards Committee

### WIBF 2026 NATIONAL INDUSTRY AWARDS CATEGORIES

1. WiBF Award for Achievement in Assets and Fund Management
2. WiBF Award for Achievement in Private Wealth and Superannuation
3. WiBF Award for Achievement in Retail Banking
4. WiBF Award for Achievement in SME & Business Banking
5. WiBF Award for Achievement in Institutional, Corporate and Investment Banking
6. WiBF Award for Achievement in Risk, Regulation and Compliance
7. WiBF Award for Achievement in Professional Services
8. WiBF Award for Achievement in Operations, Technology or Customer Support
9. WiBF Award for Achievement in Corporate Affairs
10. WiBF Award for Achievement in an EA/PA role
11. WiBF Award for Product or Technical Innovator
12. WiBF Rising Star Award
13. WiBF Inclusive Leader Award
14. WiBF Inclusive WorkPlace Award of the Year
15. WiBF ESG and Sustainability Initiative of the Year
16. WiBF Mentor of the Year
17. WiBF Mental Health Champion Award

**SCAN TO LEARN MORE ON HOW TO BECOME A SPONSOR TODAY**



## WIBF 2026 NATIONAL INDUSTRY AWARDS & SPONSORSHIP OPPORTUNITIES



### VIP Lounge

**\$10,000 +GST**

- Exclusive branding exposure of our National Industry Awards VIP room
- Branded as the VIP lounge sponsor on the website
- Branded as the VIP lounge in the promotion of the awards across all media channels for the period of the awards campaign
- Logo displayed on media wall during the entire event
- 5 premium tickets to the Awards valued at over \$1,250 with access to VIP lounge for 5 guests
- 2 branded pull-banners with your logos in front of the VIP Lounge during the VIP early arrival and welcome drinks period
- 12 branded tent-cards with a design/promotion of your choice
- Speaking opportunity on podium during the event
- One seat on the WIBF 2026 Awards Committee



### Photo Experience

**\$6,000 +GST**

- Logo displayed on media wall during the entire event
- Logo displayed on exclusive pull-banner in front of the photo experience during the arrival and welcome drinks period
- 5 premium tickets to the Awards valued at over \$1,250



### Judges Recognition Sponsor

**\$6,000 +GST**

- Exclusive branding of this sponsorship category at the Awards
- Branded as the Judges Recognition sponsor on the website
- Logo displayed on media wall during the entire event
- 5 premium tickets to the Awards valued at over \$1,250



### Media Wall Sponsorship Package

**\$2,500 +GST EACH**

#### Be at the forefront of the WIBF 2025 National Industry Awards with this exclusive branding opportunity:

- Prominent Logo Placement on the Awards Media Wall – Your brand will be showcased on the media wall, the prime backdrop for event photography and videography, ensuring visibility throughout the Awards and in post-event media coverage.
- 2 Premium Tickets to the Awards – Enjoy exclusive access to the Awards, including:  
(Tickets are valued at over \$550 and provide the ultimate experience.)
- Seating in a prime location at the event.
- Full VIP Lounge privileges to network with industry leaders and special guests.

#### Why Sponsor the WIBF Awards Media Wall?

- Maximised Brand Exposure: Gain ongoing visibility as event photos are shared across media platforms, WIBF communications, and attendees' professional networks.
- Alignment with Excellence: Associate your brand with the celebration of innovation, leadership, and progress in the banking & financial sector.
- Unmatched Networking Opportunities: Connect with 700+ influential attendees, including key decision-makers and rising stars in banking and finance community.
- Limited spots available for this premium sponsorship. Secure your place now and make a lasting impression at the WIBF 2026 National Industry Awards.



## WIBF DASHBOARD & WIBF ON-DEMAND

With a simple and free registration process, WIBF Corporate Members can unlock a world of opportunities within the Women in Banking and Finance (WIBF) community.

The WIBF Member Dashboard provides a seamless experience for staff, offering a range of exciting features and benefits. Members gain access to a comprehensive library of +100 webinars and podcasts, both live and on-demand, enabling them to expand their knowledge and stay up-to-date with the latest trends and insights in the banking and finance industry. Whether it's brushing up on industry best practices or exploring new ideas, the WIBF Member Dashboard has it all.



## WIBF Member Inclusions

### DEDICATED MEMBERS DASHBOARD AND WIBF ON DEMAND

WIBF's Member Dashboard is your gateway to exclusive resources and opportunities. All WIBF members have access to the dashboard.

### IN-PERSON INDUSTRY EVENTS

Opportunities for networking, with multiple events for members to attend.

### COMPLIMENTARY WEBINARS

Sign up for complimentary weekly webinars fostering knowledge sharing and professional development. Free for all WIBF members!

### EXCLUSIVE PROGRAMS

WIBF offers an array of dynamic programs designed to empower individuals at every stage of their careers within the banking and finance sector.

### INSPIRING MASTERCLASSES

WIBF provides a variety of masterclasses tailored to professionals at all stages of their careers.

### SPOTLIGHT OPPORTUNITIES IN OUR NEWSLETTER AND WEBSITE

Spotlight opportunities in our newsletter, giving members and partners the chance to showcase initiatives, achievements, and thought leadership to our engaged banking and finance community.

### JOINT EVENT OPPORTUNITIES

WIBF offers opportunities to host joint events, enabling members and partners to collaborate with us in delivering impactful experiences, showcase expertise, and engage directly with the banking and finance community.

### FORTNIGHTLY NEWSLETTER

Receive news, exciting updates, program opportunities and more straight to your inbox!

### HIGH SCHOOL TOOL KIT

WIBF's High School Toolkit is designed for students, parents, and speakers to help inspire the next generation of talent. The toolkit provides practical resources to support career conversations and build a strong pipeline for the future of banking and finance.

CONNECT TO THE MEMBER DASHBOARD, SCAN TO LOG IN NOW





## OUR TEAM

# WIBF BOARD



**Diana D'Ambra AM**

WiBF  
Independent Chair



**Natalie Vanstone**

WiBF President



**Stephanie Girard**

WiBF  
Chief Executive Officer



**Annella Cox**

WiBF Secretary



**Darren Boulos**

WiBF Director



**Megan Papadopoulos**

WiBF Director



**Nicole Chung**

WiBF Director



**Rebecca Warren**

WiBF Director



**Simon Warner**

WiBF Director



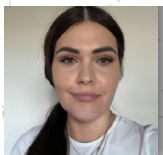
**Tom Clayton**

WiBF Director

## WIBF TEAM



**Hayley Binet**  
Events & Education  
Coordinator



**Kiesha Back**  
Marketing Coordinator



**Phillipa Edgar**  
Member Services  
Coordinator



**Rosie Arnautovic**  
Events & Education  
Coordinator

## GET IN TOUCH WITH US

0432 190 244 

[wibf.org.au](http://wibf.org.au) 

[contact@wibf.org.au](mailto:contact@wibf.org.au) 

GPO Box 2318 Sydney NSW 2001 